

## Automation retrofit – brings new life to dated equipment.

**Grinding & Dispersing Customer Service**



With the S7 control system Bühler offers a solution to upgrade existing production lines. Older systems can easily be substituted with the state-of-the-art operation system S7 without a long-lasting interruption of the production.

Furthermore the S7 provides an update at a competitive price and helps to cut costs in the long term – because it is becoming more and more difficult and costly to find both spare parts and technical support for ageing systems like the Siemens S5 control system or the even older Bühler SAIA control system. The new S7 offers various possibilities of linkage to superior systems.

Concerning this, the costs for retrofitting a PLC are often comparable with expenditures for necessary spare parts to keep an old control system going. Customers of Bühler can

choose between a partial and complete system migration. Both solutions are available for ex- and non-ex requirements.

### **Complete system migration**

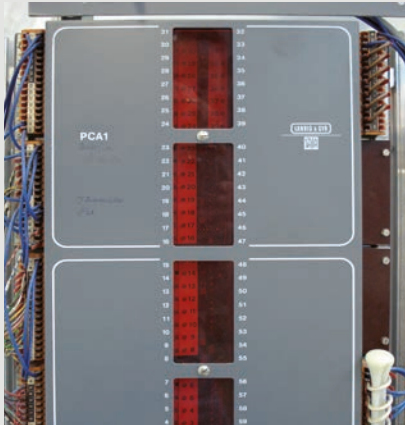
This high-end solution includes a new control cabinet, new wiring and a new operating panel.

### **Partial system migration**

The partial migration consists of a new operating panel and a state-of-the-art PLC system.



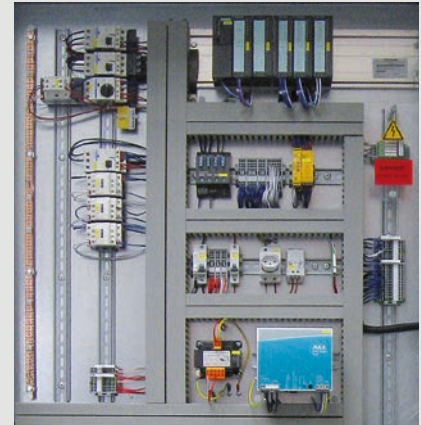
## Automation retrofit.



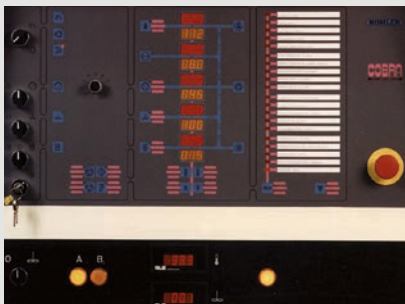
Older Bühler control system SAIA.



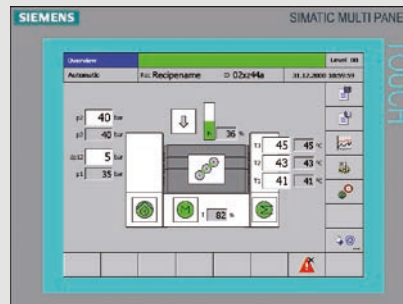
Older Bühler control system S5.



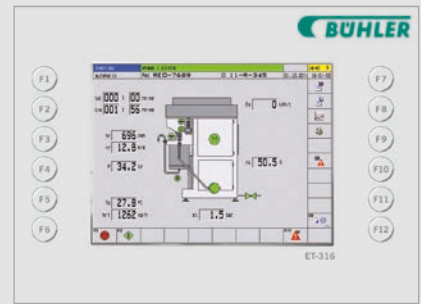
Complete system migration with a new cabinet and wiring.



Older Bühler automation system SAIA.



Bühler automation with SIEMENS 8" touch screen panel for non-ex-applications.



Bühler automation with STAHL 10" touch screen panel for ex-applications.

### Higher productivity

The new control system helps to increase productivity thanks to an easy to use operating panel and information system for alarm messages.

### Increased product quality

Production processes can be monitored on a touch screen display (8–10") and in case of changing parameters the operator can easily optimize them.

### Availability of spare parts

After changing to the new S7 PLC Bühler guarantees full availability of spare parts.

### No unplanned interruption

When substituting older control systems customers have full freedom to shut down the line according to the production needs. Unexpected shortfalls and problems due to a broken control system can thus be avoided.

### Mechanical 0-hour overhauling – restoring to 100% performance

A mill overhauled by Bühler will show the same performance as the original machine when it left the assembly works many years before. Bühler also offers a 12 months warranty on the exchange parts.

If you have any questions regarding this offering or about our services, please send an e-mail to: [cs.gd@buhlergroup.com](mailto:cs.gd@buhlergroup.com)

**Hotline**

**The direct line to our experts**

Technical support  
Spare parts

Tel. +49 (0) 6023 9194 499  
Tel. +49 (0) 6023 9194 423

**Bühler Alzenau GmbH – Business Area Grinding & Dispersing**

Siemensstr. 88  
D-63755 Alzenau, Germany  
[cs.gd@buhlergroup.com](mailto:cs.gd@buhlergroup.com)

T +49 (0) 6023 9194 402  
F +49 (0) 6023 9194 444  
[buhlergroup.com](http://buhlergroup.com)

**BUHLER**